



1-30-2023 CTW Automation presents.....

### CTW FAQ – significant figures

**Q:** My shaft diameter is 12.5 mm but I cannot type in ".5" because it only lets me enter whole numbers.

**A:** Every unit within CTW Probe software has a user-defined significant figure. The default is "0" or no significant figures. By changing this setting, you can use "12.5" or whatever you need to enter. Another example is M/sec because there is only one significant figure, and you typically need "3".

**Solution:**

From the Toolbar, select Preferences / Unit preferences.

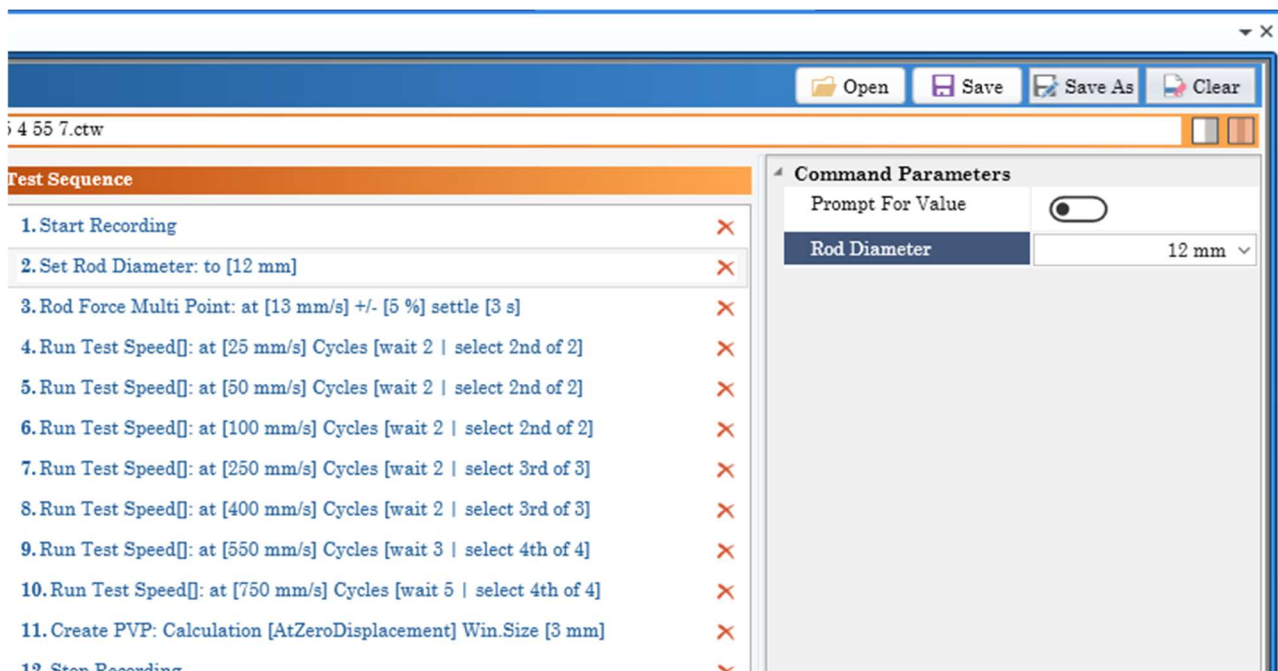
Then click the arrow next to the "%" to expand the Units and scroll to find the unit you want to change. In this case you want to change "mm".

Change the "Precision" to the number of decimal places you need. In this case "1" or "2".

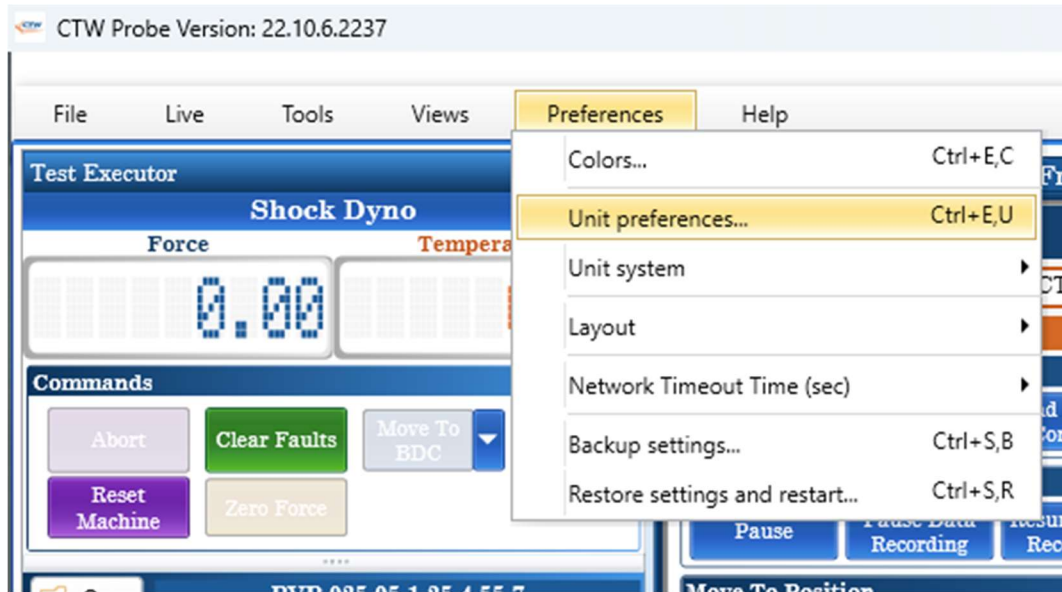
Click "OK" and the software will update any use of "mm" to have more significant figures.

#ctwfaq significant figures for units

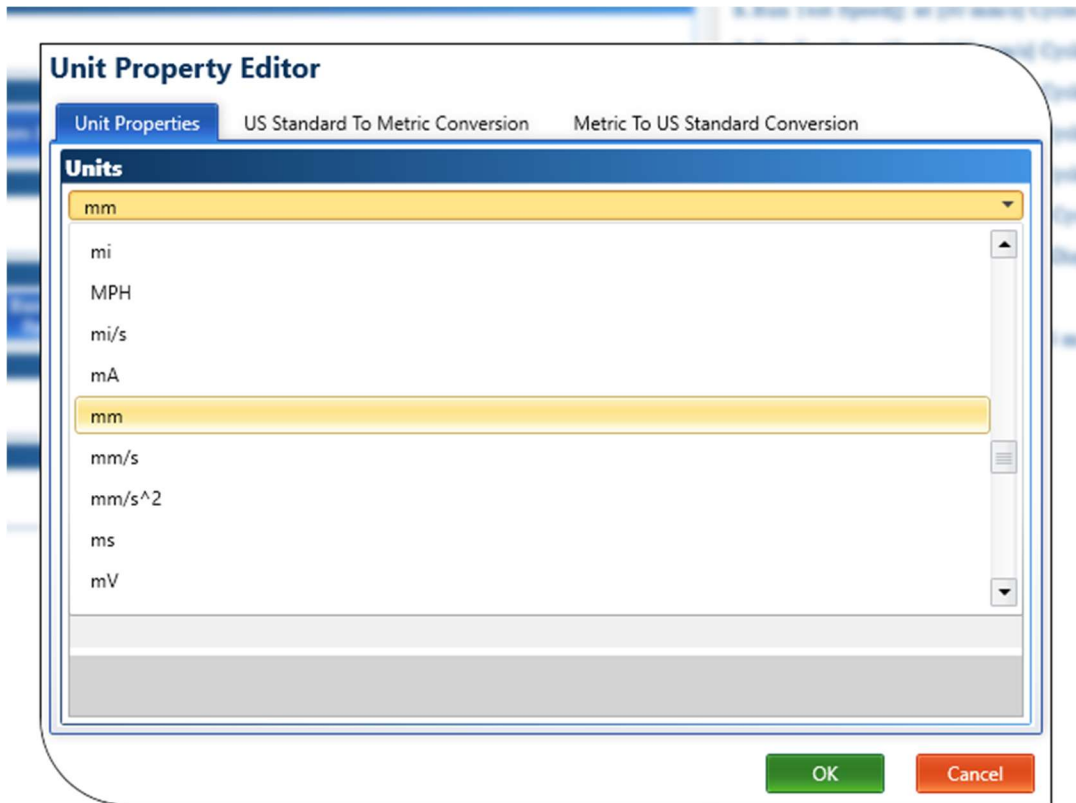
Visual Solution.



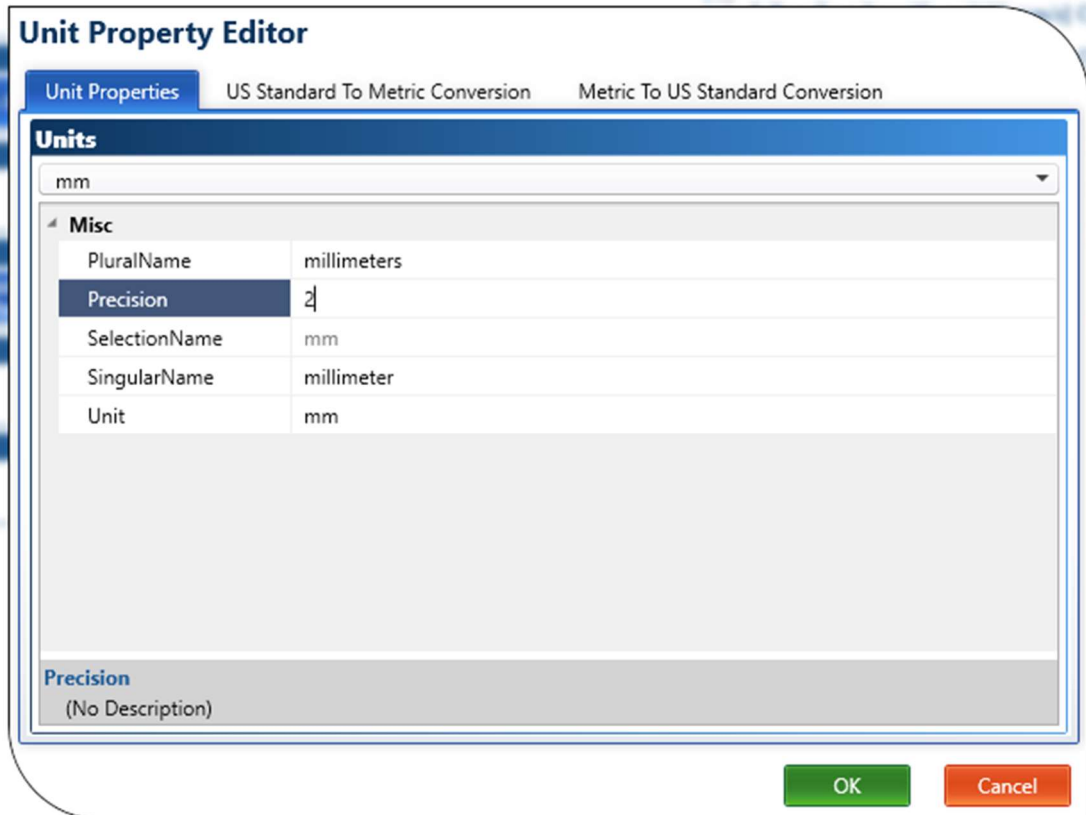
A – Need more significant figures for shaft diameter



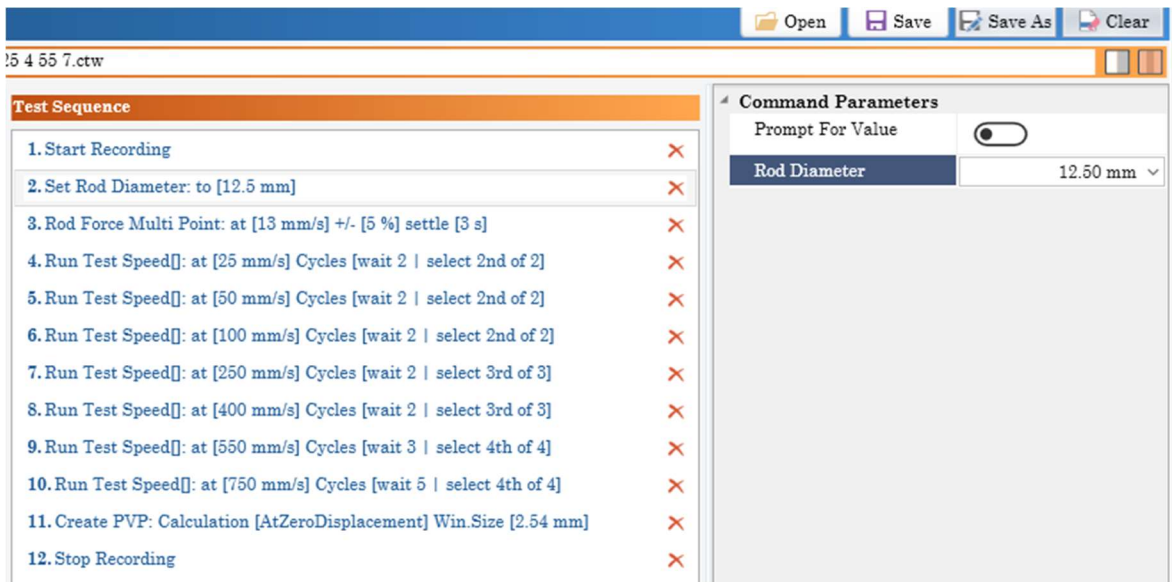
B – On the Toolbar, select “Preferences” and then “Unit preferences”



C – Use the Down arrow to show the list of Units, scroll to find your unit (mm)



D – Change the Precision to the number of significant figures you need



E – Click “OK” and CTW Probe will update the “mm”