

CTW Automation, Inc.

### LA / EMA Software install for DEMO

This will help the User get the LA and EMA Probe software running in Demo mode on a computer. It will also help to allow for the building of Test Sequences by creating a Demo Actuator.

Getting started.

1 – go to <http://www.ctwautomation.com/> to get a copy of the software. It does not technically matter which one as they will all look for updates.

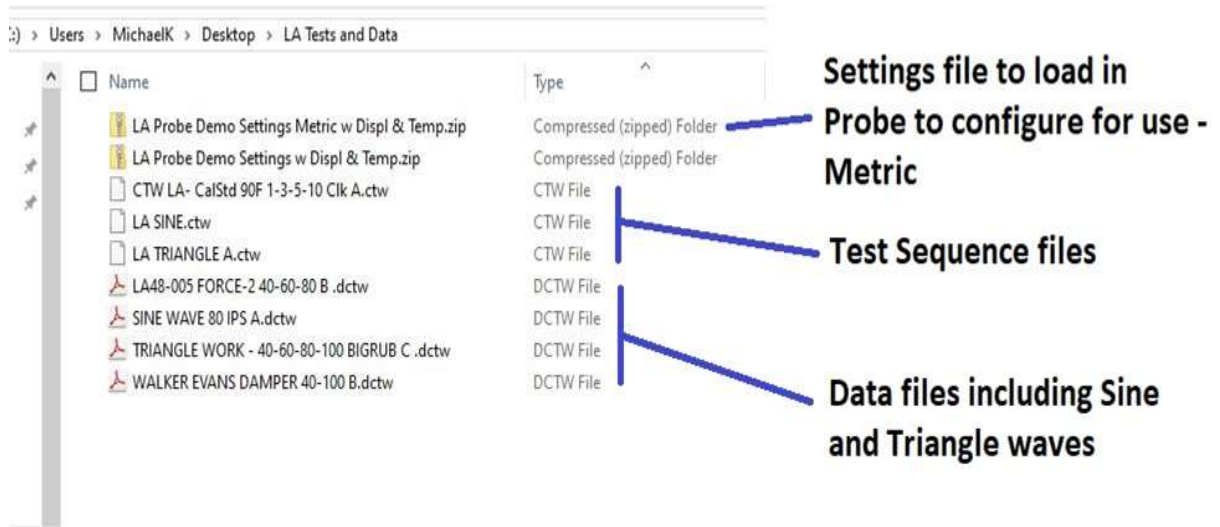
A - Software is listed under the Software tab.  
Download the latest version.

B - Also, download the sample files and settings from the:  
They will be located here down the Software page:  
*LA & EMA Demo software tools*

#### **\* LA & EMA Demo tools**

It will contain:

(2) Settings.zip files and (3) Test Sequence files (\*.CTW) and (4) data files (\*.DCTW)



2 - You can now begin the Software install by double clicking on the "EXE" file.

A - Pick "All Others"



B - Then make sure the "Aerotech" is checked.



### 3 - Start the Probe Software.

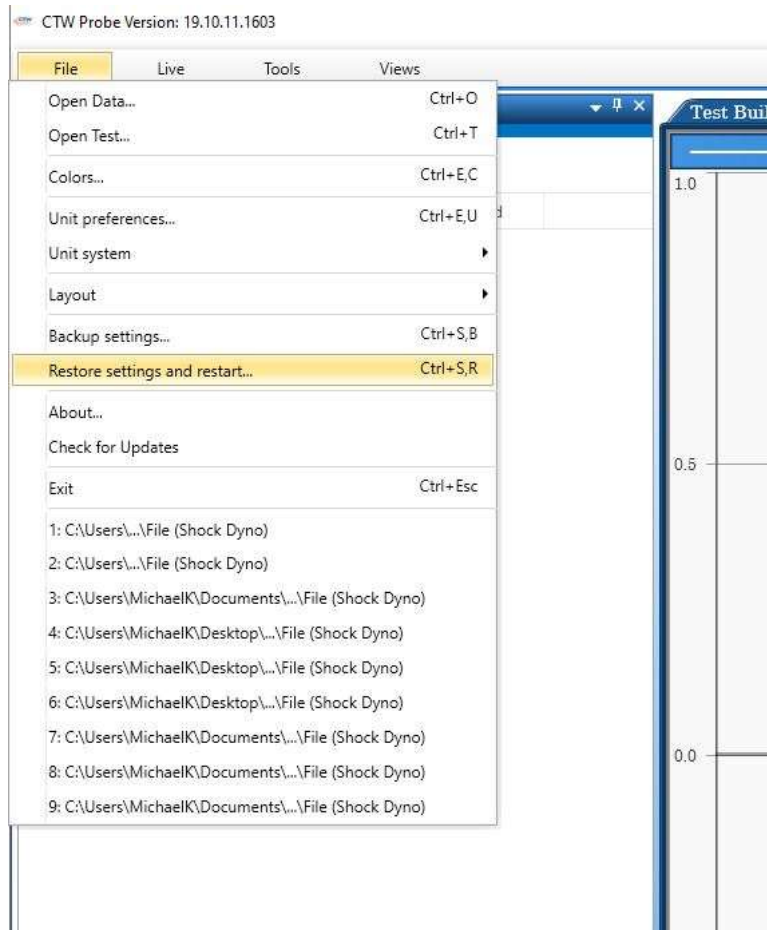
A - Now we want to load the Demo Settings file that CTW created to help this process. Go to “File” and then “Restore settings and restart.....” in the next window, please choose one of the Setting.Zip folders you downloaded in step 1 – B.

It will be one of (2) based on your Units preference

*“LA Probe Demo Settings Metric w Displ & Temp.zip”*

or

*“LA Probe Demo Settings w Displ & Temp.zip”*



The software should re-start and load the Settings file you chose.

4 - Then go to the Configuration Tab and click on the Green box "Equip...."

**Shock Dyno**

**Configuration**

Equip... Save Copy Delete

Default

A1

**Analog In**

Analog-in Channels	8
Channels	9 channels
Maximum Channel Rate	20000
Sample Rate	1000
Voltage Gain Range	Input +/- 10 V

**Cycle Detection**

Crossover Accept Percentage	10.0 %
-----------------------------	--------

**Gains**

AFF	0.00
DFF	0.00
JFF	0.00
KD1	0.00
KI	10000.00
KP	1000.00
KP1	0.00
KPI	0.00
KPOS	0.00
PFF	0.00
Static Friction Compensation	0.0 Amps
VFF	0.00

**Motion Parameters**

Abort Deceleration Limit (G)	0.0 G
------------------------------	-------

Select the "Demo Linear Actuator" and click ok to get back to the main screen.



Click on the Save icon at the top of Configuration tab.

Now you should be able to see in Test Builder the functions of the Linear actuator. You should also be able to build an actual Test Sequence that can be transferred to the operating computer.

You should watch the YouTube Videos for more help.  
Our channel -

<https://www.youtube.com/channel/UCV6z3k7Dz5RVbSv0Jd19mzw>

4 videos on LA/EMA software

[https://www.youtube.com/playlist?list=PLCXNeC1kjErcMheC\\_76pvB\\_J93dVmELYG](https://www.youtube.com/playlist?list=PLCXNeC1kjErcMheC_76pvB_J93dVmELYG)